



# ALPHA 1800

## Spreader/Feeder

### DYNAMIC PROCESSING SOLUTIONS!

Braun Alpha Spreader/Feeders maximize the productivity of your flatwork area. With fewer moving parts, a cableless spreading mechanism and rugged design and construction, Braun Alphas meet your needs for reliability and repeated high performance. The Alpha's microprocessor ensures precision spreading and feeding, with each piece accurately squared and centered.

The Alpha Series consistently delivers high quality output for operators with minimal training. Even new workers will quickly realize outstanding results. For reliability, performance and a better finished product, depend on Braun Alpha Series Spreader/Feeders.



U.S.A.

**ISO 9001 Certified**

All Braun Products are Proudly  
Manufactured in the U.S.A.

**[gabraun.com](http://gabraun.com)**

## ALPHA 1800



### FACT

There are numerous claims on spreader/feeder operations and product performance in the marketplace today.

But if you are looking for consistent performance and high quality output you simply cannot “toss” sheets onto a spreader/feeder and expect a crisp straight leading edge to produce the results that you and your customers deserve and expect!

### Braun Alpha 1200

*Easy to Operate.  
High Quality Output.  
Consistent  
Performance!*

### HOW WE DO IT AND WHY WE DO IT

Braun has incorporated the latest in technology utilizing an auto feed mechanism and transfer system that leverages optical sensors to improve ergonomics, cycle speeds and feed quality. Our automatic leading edge and width sensing system allows for a seamless transition for those plants that process mixed items in a single lane. It also relieves the stress / tension that is created by spreading the products at high speed. This stress relief capability assures a smooth transfer from the spread mechanism to the feed table. It also assures a quality leading edge is achieved.

This approach, as opposed to other designs, leverages consistent mechanical and electronic technology as opposed to the inconsistent application of air pipes, nozzles and jets to provide a straight and flat leading edge post spreading.

### BRAUN'S SWING-DOWN DISCHARGE CONVEYOR

Allows operators access to the ironer for maintenance without having to move the feeder!

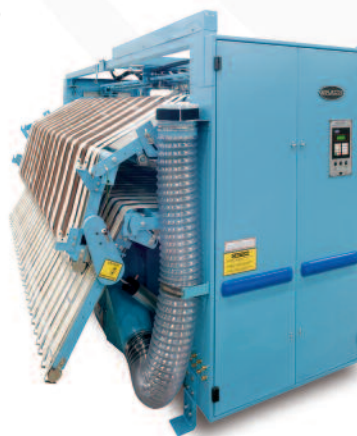
### INDUSTRY LEADING

The Braun Alpha leads the industry in high volume processing with exceptional product quality results. Equipped with four feed stations and a dual spread deck, the Alpha 1800 can overlap flatwork at speeds of up to 180 FPM under the precise control of the Braun Microprocessor.

Small pieces can be fed directly into a flatwork ironer by means of a conveyor that automatically rises to a convenient working height when activated by selecting a pre-set program. The feeding portion of the spreader/feeder remains in the original position for operator ease of use and comfort. For small piece feeding

Braun offers an optional vacuum deck feature.

All Braun Alpha series spreader/feeders require minimal operator training



## STANDARD FEATURES

- Bilingual control display (English/Spanish)
- Caster mounted for easy movement
- 24V DC solid state circuitry with troubleshooting capability
- Digital, re-settable production counters for each feed station
- 120" working width
- Ergonomic feed design (45 degree tilt)
- Programmable inverter conveyor drive with digital speed indicator
- Memory card for formula(s) back up
- Ethernet ready
- Wired for, and easily adaptable to, the Braun ARC (automatic reject computer) quality control unit
- Illuminated E-stop
- Integrated photo-eye for material detection
- Feed transfer release buttons for each station
- Leading edge accelerator
- Visibility of feeding, spreading and lay-down
- Transfer device between feeder out-feed table and ironer in-feed table

- Spread tension control or tautness detection
- Spread tension release
- Multi-axis control: feed forward-back, clamp open-close tension release

## OPTIONAL FEATURES

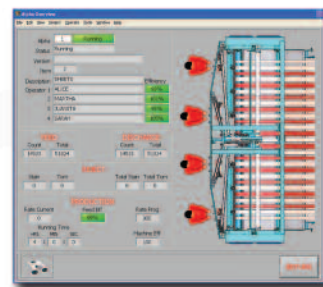
- Discharge table canopy
- Red, green and yellow production status indicator lights
- Lighted small piece feed deck
- WASHNET® (for Braun equipped finishing lines)
- Vacuum deck for small piece feeding
- Swing down discharge conveyor for easy access to the ironer for maintenance without having to move the feeder.



**Flashcard for Easy Downloading of PLC Formulas**



**Spanish/English Bilingual Screen Displays**



**WASHNET® Data Management Tool**

## SPECIFICATIONS

Type	Model Number	No. Feed Stations	Shipping Weight	Shipping Dimensions
Alpha 1800	TP4SSF	4	5,250 lbs	162"(l) x 96"(w) x 102"(h) 4115mm (l) x 2438mm (w) x 2590mm (h)

Note: Specifications subject to change without notice



**ISO 9001 CERTIFIED**

**G.A. Braun, Inc.**  
79 General Irwin Boulevard  
N. Syracuse, NY 13212

**Mail to:**  
P.O. Box 3029  
Syracuse, NY 13220-3029

**Phone**  
1-800-432-7286

**Fax**  
(315) 475-4130

**Parts Help Desk**  
1-800-432-7286 X 1

**Service Help Desk**  
1-800-432-7286 X 2



**U.S.A.**

**All Braun Products are Proudly  
Manufactured in the U.S.A.**